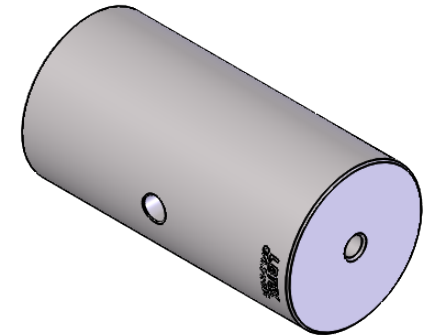


$\Phi 6\text{mm}$ [0.24in] THRU HOLE
FOR 5mm BALL DRIVER OR HEX KEY
PROVIDES EXTRA TORQUE WHEN
TIGHTENING/REMOVING MOUNTS



NO.	ITEM	A LENGTH/mm[in]	WEIGHT/kg
1	OP1.5-25B6	25[0.98]	0.21
2	OP1.5-50B6	50[1.97]	0.44
3	OP1.5-75B6	75[2.95]	0.67
4	OP1.5-100B6	100[3.94]	0.89
5	OP1.5-150B6	150[5.91]	1.35
6	OP1.5-200B6	200[7.87]	1.8
7	OP1.5-250B6	250[9.84]	2.25
8	OP1.5-300B6	300[11.81]	2.71
9	OP1.5-350B6	350[13.78]	3.16
10	OP1.5-400B6	400[15.75]	3.62

DRAWING PROJECTION							
	NAME	DATE	OP1.5-xxB6				
DRAWN	CZH	DEC./9th/20	$\Phi 38\text{mm}$ EXTENSION ROD				
APPROVAL	YCH	DEC./9th/20	MATERIAL	WEIGHT	SCALE	REV	
FOR INFORMATION ONLY NOT FOR MANUFACTURING PURPOSES			N/A	* Kg	1:1	B	