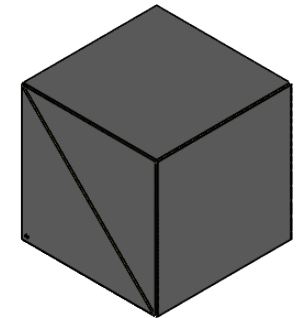
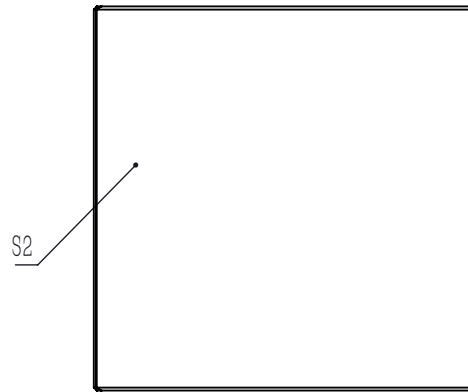


SPLITTING COATING(BEVEL FACE IN THE TRIANGULAR PRISM WITH DOT)

NOTES

1. CLEAR APERTURE: $>80\%$ WxL
2. DIAMETER TOLERANCE: $+0.0/-0.1$ mm
3. EXTINCTION RATIO(T_p, T_s): $>2000:1$
4. DESIGN WAVELENGTH: 1030 nm
5. TRANSMITTED BEAM DEVIATION: ≤ 5 arcmin
6. REFLECTED BEAM DEVIATION: $\leq 90^\circ \pm 5$ arcmin
7. SURFACE QUALITY(S/D): 20/10
8. WAVEFRONT ERROR(RMS): $< \lambda/4@633$ nm
9. PARALLELISM(S1, S2, S3, S4): ≤ 10 arcsec
10. AR COATING(S1, S2, S3, S4): V Coating @1030 nm, Rabs: $< 0.25\%$, 0° AOI
11. S POLARIZATION REFLECTION: $>99.5\%$
12. P POLARIZATION TRANSMISSION: $>97\%$
13. CHAMFER: < 0.5 mm $\times 45^\circ$
14. OPERATING TEMPERATURE: $-50^\circ \sim 90^\circ$
15. GLUED(S5, S6): LIGHT GLUE PROCESS



DRAWING PROJECTION			LBTEK			
NAME	DATE	PBS24-1030-HP				
DRAWN	LZHOU	Aug./12th/24	LASER LINE POLARIZATION BEAM SPLITTER L=25.4 mm, $T_p, T_s > 2000:1@1030$ nm			
APPROVAL	WCHENG	Aug./12th/24	MATERIAL	WEIGHT	SCALE	REV
FOR INFORMATION ONLY NOT FOR MANUFACTURING PURPOSES			UVFS	36 g	2:1	A