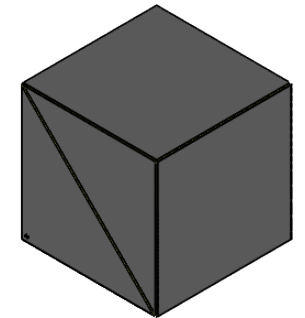
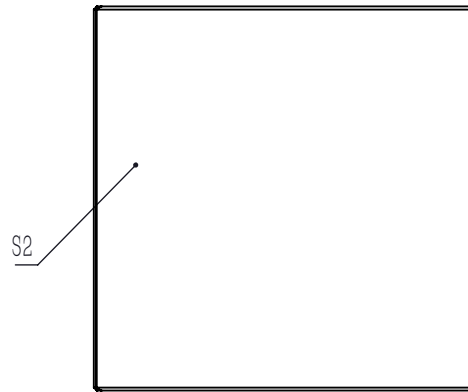


SPLITTING COATING(BEVEL FACE IN THE TRIANGULAR PRISM WITH DOT)



NOTES

1. CLEAR APERTURE: >80% WxL
2. DIAMETER TOLERANCE: +0.0/-0.1 mm
3. EXTINCTION RATIO(Tp,Ts): >3000:1
4. DESIGN WAVELENGTH: 1064 nm
5. TRANSMITTED BEAM DEVIATION: ≤5 arcmin
6. REFLECTED BEAM DEVIATION: ≤90° ±5 arcmin
7. SURFACE QUALITY(S/D): 20/10
8. WAVEFRONT ERROR(RMS): $\lambda/4@633\text{ nm}$
9. PARALLELISM(S1,S2,S3,S4): ≤10 arcsec
10. AR COATING(S1,S2,S3,S4): V Coating @1064 nm,Rabs: <math><0.25\%,0^\circ\text{ AOI}</math>
11. S POLARIZATION REFLECTION: >99.5%
12. P POLARIZATION TRANSMISSION: >95%
13. CHAMFER: <math><0.5\text{ mm}\times 45^\circ</math>
14. OPERATING TEMPERATURE: -50° ~90°
15. GLUED(S5,S6): NOA61

| | | | | | | |
|--|--------|--------------|---|--------|-------|-----|
| DRAWING PROJECTION | | | LBTEK | | | |
| NAME | DATE | PBS24-1064 | | | | |
| DRAWN | LZHOU | Aug./12th/24 | LASER LINE POLARIZATION BEAM SPLITTER L=25.4 mm, Tp, Ts>3000:1@1064 nm | | | |
| APPROVAL | WCHENG | Aug./12th/24 | MATERIAL | WEIGHT | SCALE | REV |
| FOR INFORMATION ONLY NOT FOR MANUFACTURING PURPOSES | | | UVFS | 36 g | 2:1 | A |