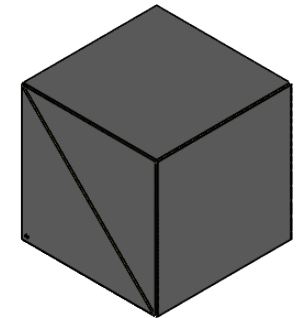
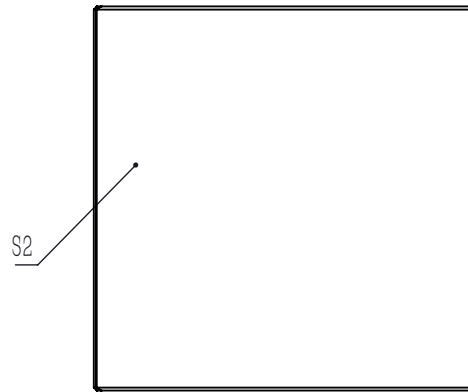


SPLITTING COATING(BEVEL FACE IN THE TRIANGULAR PRISM WITH DOT)

NOTES

1. CLEAR APERTURE: $\phi 20.32$ mm
2. DIAMETER TOLERANCE: $+0.0/-0.2$ mm
3. EXTINCTION RATIO($T_p:T_s$): $>2000:1$
4. DESIGN WAVELENGTH: 460 nm
5. TRANSMITTED BEAM DEVIATION: $\leq 0^\circ \pm 5$ arcmin
6. REFLECTED BEAM DEVIATION: $\leq 90^\circ \pm 5$ arcmin
7. SURFACE QUALITY(S/D): 20/10
8. WAVEFRONT ERROR: $< \lambda/4$ @633 nm, $\phi 20.32$ mm
9. AR COATING(S1,S2,S3,S4): V Coating @460 nm, $R_{abs} < 0.25\%$, 6° AOI, single face
10. S POLARIZATION REFLECTION: $>99.5\%$
11. P POLARIZATION TRANSMISSION: $>97\%$
12. CHAMFER: < 0.2 mm \times 45°
13. OPERATING TEMPERATURE: $-25^\circ \sim 90^\circ$
14. GLUED(S5,S6): LIGHT GLUE PROCESS



DRAWING PROJECTION			LBTEK			
NAME	DATE					
			PBS24-460-HP			
DRAWN	LZHOU	Aug./12th/24	LASER LINE POLARIZATION BEAM SPLITTER L=25.4 mm, $T_p:T_s > 2000:1$ @460 nm			
APPROVAL	WCHENG	Aug./12th/24	MATERIAL	WEIGHT	SCALE	REV
FOR INFORMATION ONLY NOT FOR MANUFACTURING PURPOSES			UVFS	36 g	2:1	A