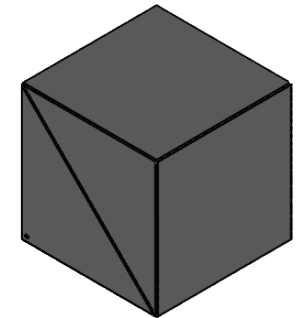
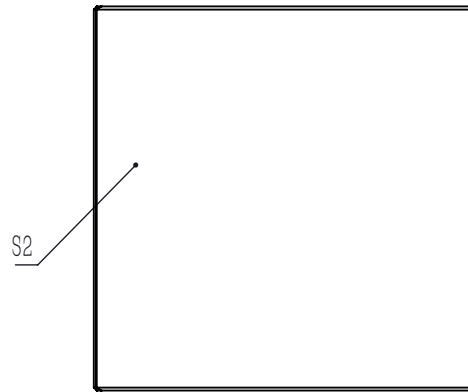


SPLITTING COATING(BEVEL FACE IN THE TRIANGULAR PRISM WITH DOT)

NOTES

1. CLEAR APERTURE: >80% WxL
2. DIAMETER TOLERANCE: +0.0/-0.1 mm
3. EXTINCTION RATIO(Tp:Ts): >2000:1
4. DESIGN WAVELENGTH: 808 nm
5. TRANSMITTED BEAM DEVIATION: ≤5 arcmin
6. REFLECTED BEAM DEVIATION: ≤90° ±5 arcmin
7. SURFACE QUALITY(S/D): 20/10
8. WAVEFRONT ERROR(RMS): <math>< \lambda / 4 @ 808 \text{ nm}</math>
9. PARALLELISM(S1, S2, S3, S4): ≤10 arcsec
10. AR COATING(S1, S2, S3, S4): V Coating @808 nm, Rabs: <math>< 0.25\%, 0^\circ \text{ AOI}</math>
11. S POLARIZATION REFLECTION: >99.5%
12. P POLARIZATION TRANSMISSION: >97%
13. CHAMFER: <math>< 0.5 \text{ mm} \times 45^\circ</math>
14. OPERATING TEMPERATURE: -50°C ~ 90°C
15. GLUED(S5, S6): LIGHT GLUE PROCESS



DRAWING PROJECTION			LBTEK			
NAME	DATE	PBS24-808-HP				
DRAWN	LZHOU	Aug./12th/24	LASER LINE POLARIZATION BEAM SPLITTER L=25.4 mm, Tp:Ts>2000:1@808 nm			
APPROVAL	WCHENG	Aug./12th/24	MATERIAL	WEIGHT	SCALE	REV
FOR INFORMATION ONLY NOT FOR MANUFACTURING PURPOSES			UVFS	36 g	2:1	A