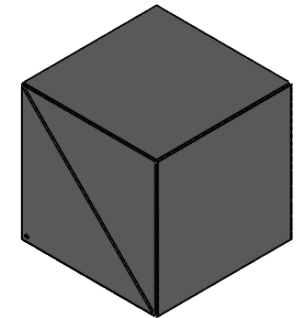
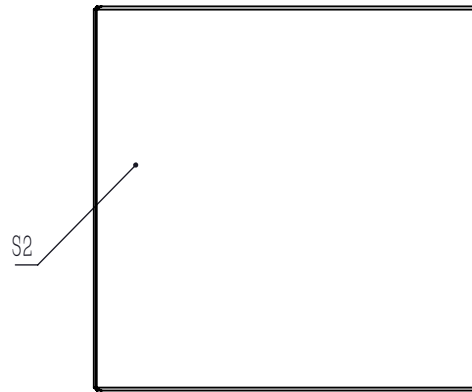


SPLITTING COATING(BEVEL FACE IN THE TRIANGULAR PRISM WITH DOT)



NOTES

1. CLEAR APERTURE: >80% WxL
2. DIAMETER TOLERANCE: +0.0/-0.1 mm
3. EXTINCTION RATIO(Tp,Ts): >3000:1
4. DESIGN WAVELENGTH: 808 nm
5. TRANSMITTED BEAM DEVIATION: ≤5 arcmin
6. REFLECTED BEAM DEVIATION: ≤90° ±5 arcmin
7. SURFACE QUALITY(S/D): 20/10
8. WAVEFRONT ERROR(RMS): <math>< \lambda / 4 @ 633 \text{ nm}</math>
9. PARALLELISM(S1,S2,S3,S4): ≤10 arcsec
10. AR COATING(S1,S2,S3,S4): V Coating @808 nm,Rabs: <math>< 0.25\%, 0^\circ \text{ AOI}</math>
11. S POLARIZATION REFLECTION: >99.5%
12. P POLARIZATION TRANSMISSION: >95%
13. CHAMFER: <math>< 0.5 \text{ mm} \times 45^\circ</math>
14. OPERATING TEMPERATURE: -50° ~90°
15. GLUED(S5,S6): NOA61

DRAWING PROJECTION			<b>LBTEK</b>			
NAME	DATE	PBS24-808				
DRAWN	LZHOU	Aug./12th/24	LASER LINE POLARIZATION BEAM SPLITTER L=25.4 mm,Tp,Ts>3000:1@808 nm			
APPROVAL	WCHENG	Aug./12th/24	MATERIAL	WEIGHT	SCALE	REV
FOR INFORMATION ONLY NOT FOR MANUFACTURING PURPOSES			UVFS	36 g	2:1	A