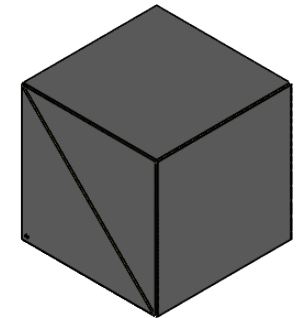
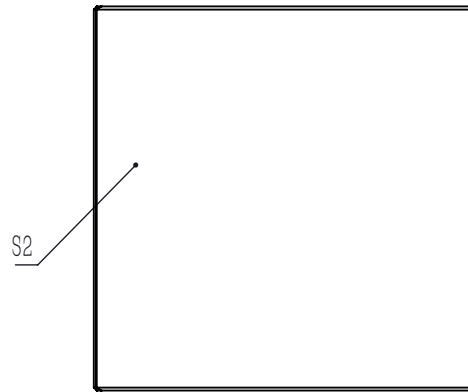


SPLITTING COATING(BEVEL FACE IN THE TRIANGULAR PRISM WITH DOT)

NOTES

1. CLEAR APERTURE:  $>80\%$  WxL
2. DIAMETER TOLERANCE:  $+0.0/-0.1$  mm
3. EXTINCTION RATIO( $T_p:T_s$ ):  $>2000:1$
4. DESIGN WAVELENGTH: 830 nm
5. TRANSMITTED BEAM DEVIATION:  $\leq 5$  arcmin
6. REFLECTED BEAM DEVIATION:  $\leq 90^\circ \pm 5$  arcmin
7. SURFACE QUALITY(S/D): 20/10
8. WAVEFRONT ERROR(RMS):  $< \lambda/4@833$  nm
9. PARALLELISM(S1,S2,S3,S4):  $\leq 10$  arcsec
10. AR COATING(S1,S2,S3,S4): V Coating @830 nm,Rabs:  $<0.25\%$ ,  $0^\circ$  AOI
11. S POLARIZATION REFLECTION:  $>99.5\%$
12. P POLARIZATION TRANSMISSION:  $>97\%$
13. CHAMFER:  $<0.5$  mm  $\times 45^\circ$
14. OPERATING TEMPERATURE:  $-50^\circ \sim 90^\circ$
15. GLUED(S5,S6): LIGHT GLUE PROCESS



DRAWING PROJECTION			<b>LBTEK</b>			
	NAME	DATE	PBS24-830-HP			
DRAWN	LZHOU	Aug./12th/24	LASER LINE POLARIZATION BEAM SPLITTER L=25.4 mm, $T_p:T_s > 2000:1@830$ nm			
APPROVAL	WCHENG	Aug./12th/24	MATERIAL	WEIGHT	SCALE	REV
FOR INFORMATION ONLY NOT FOR MANUFACTURING PURPOSES			UVFS	36 g	2:1	A