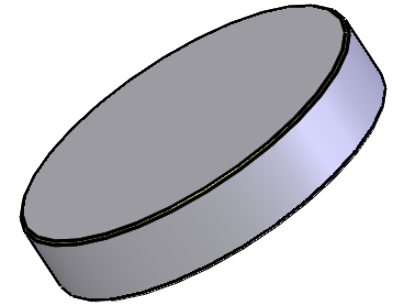
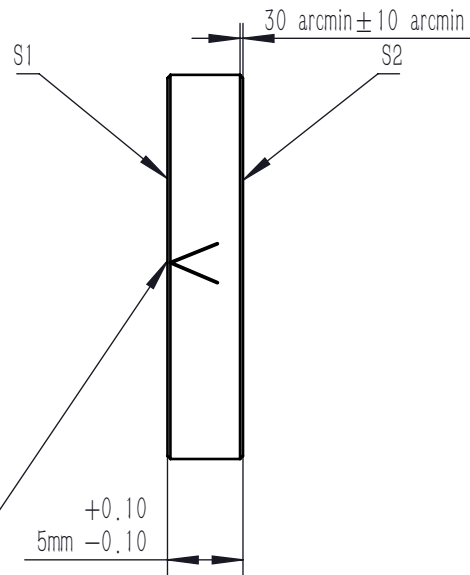
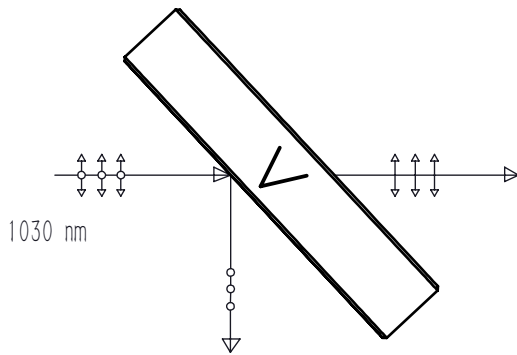


ARROW POINTS TO THE INCIDENT SURFACE



NOTES

1. MATERIAL: UVFS
2. CLEAR APERTURE: >90%
3. DESIGN WAVELENGTH: 1030 nm
4. DIAMETER TOLERANCE: +0.0/-0.1 mm
5. THICKNESS TOLERANCE: ±0.1 mm
6. EXTINCTION RATIO: >10000: 1
7. SURFACE QUALITY(S/D): 40/20
8. WAVEFRONT ERROR(RMS):  $\lambda/8@632.8 \text{ nm}$
9. SURFACE FLATNESS:  $\lambda/4@632.8 \text{ nm}$
10. SPILTTING COATING(S1,S2): POLARIZATION SPILTTING COATING  
 P POLARIZATION TRANSMISSION:  $T_p > 93\% @ 1030 \text{ nm}$ ,  
 S POLARIZATION TRANSMISSION:  $T_s < 0.5\% @ 1030 \text{ nm}, AOI 45^\circ$
11. CHAMFER:  $45^\circ, < 0.2 \text{ mm}$



DRAWING PROJECTION			<b>LBTEK</b>			
	NAME	DATE	PBSF-24-1030			
DRAWN	LZHOU	Aug./12th/24	POLARIZATION FLAT BEAM SPLITTER $\text{Ø} 25.4 \text{ mm} \times 5 \text{ mm}, 1030 \text{ nm}$			
APPROVAL	WCHENG	Aug./12th/24	MATERIAL	WEIGHT	SCALE	REV
FOR INFORMATION ONLY NOT FOR MANUFACTURING PURPOSES			UVFS	5.6 g	2:1	B