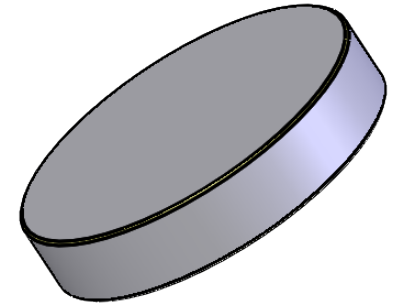
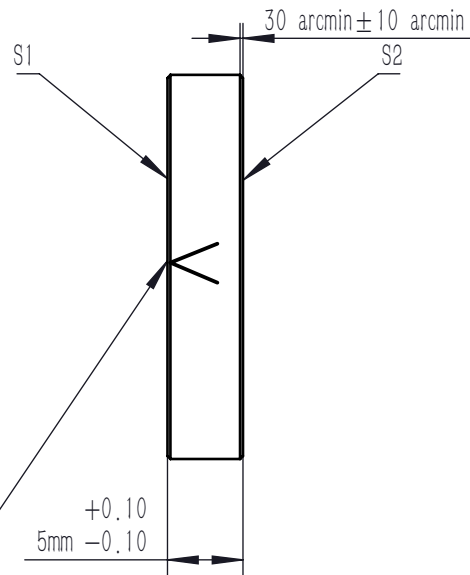
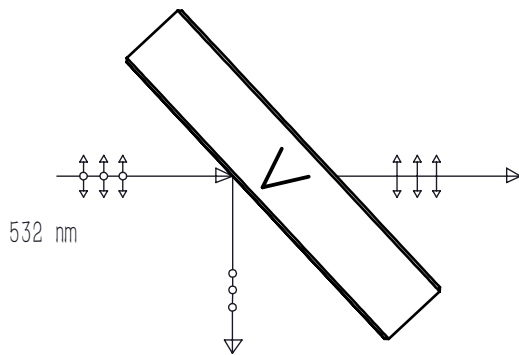


ARROW POINTS TO THE INCIDENT SURFACE



NOTES

1. MATERIAL: UVFS
2. CLEAR APERTURE: >90%
3. DESIGN WAVELENGTH: 532 nm
4. DIAMETER TOLERANCE: +0.0/-0.1 mm
5. THICKNESS TOLERANCE:  $\pm 0.1$  mm
6. EXTINCTION RATIO: >10000: 1
7. SURFACE QUALITY(S/D): 40/20
8. WAVEFRONT ERROR(RMS):  $\lambda/8@632.8$  nm
9. SURFACE FLATNESS:  $\lambda/4@632.8$  nm
10. SPLITTING COATING(S1,S2): POLARIZATION SPLITTING COATING  
 P POLARIZATION TRANSMISSION:  $T_p > 93\% @ 532$  nm,  
 S POLARIZATION TRANSMISSION:  $T_s < 0.5\% @ 532$  nm, AOI 45°
11. CHAMFER: 45° , <0.3 mm



|  |        |              |   |        |       |     |
|--|--------|--------------|---|--------|-------|-----|
| DRAWING PROJECTION                                     |        |              | <b>LBTEK</b>  |        |       |     |
|  | NAME   | DATE         | PBSF-24-532   |        |       |     |
| DRAWN  | LZHOU  | Aug./12th/24 | POLARIZATION FLAT BEAM SPLITTER<br>$\varnothing 25.4$ mm x 5 mm, 532 nm |        |       |     |
| APPROVAL   | WCHENG | Aug./12th/24 | MATERIAL  | WEIGHT | SCALE | REV |
| FOR INFORMATION ONLY<br>NOT FOR MANUFACTURING PURPOSES |        |              | UVFS  | 5.6 g  | 2:1   | A   |