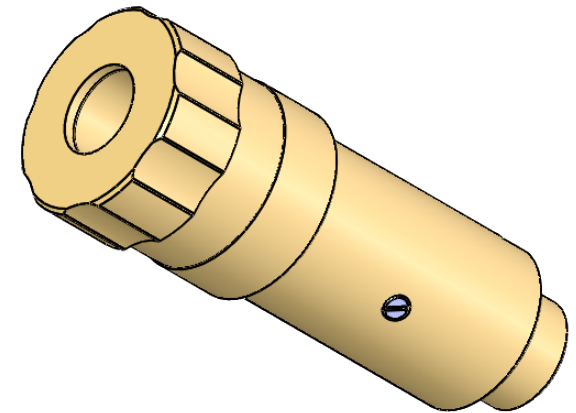
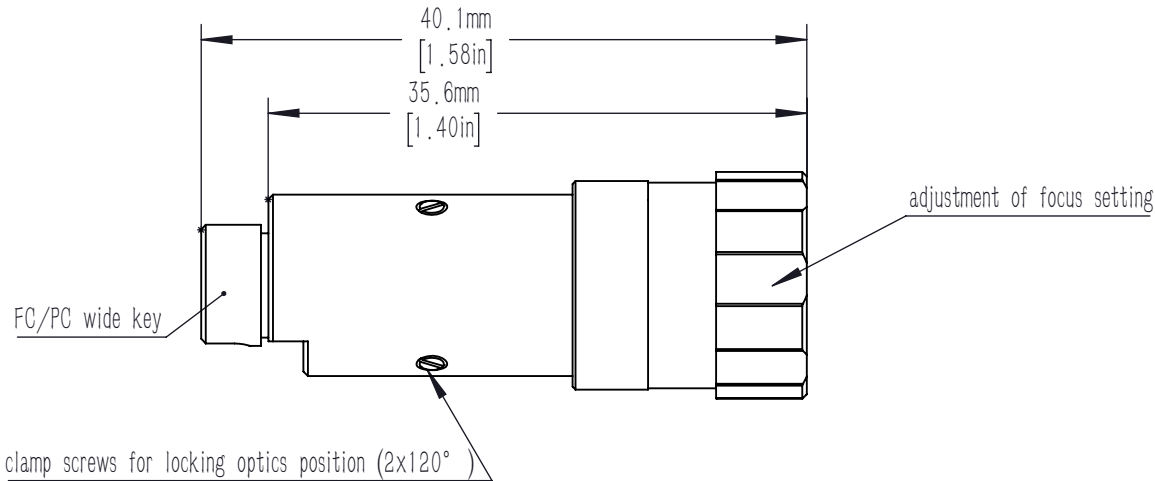
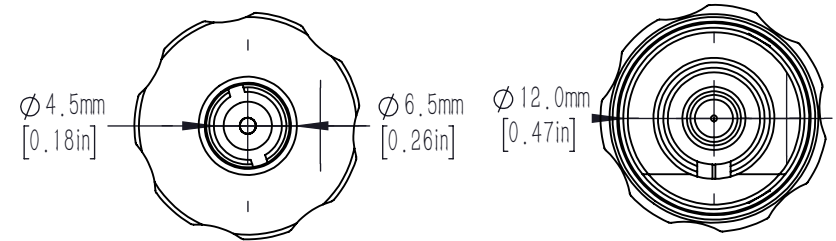


Pin screw for additional locking of the fiber ferrule.



notes,

- 1.focal length: 7.5 mm
- 2.Waist beam spot diameter: 1.406 mm@ 515 nm 460HP
- 3.Interface type: FC/PC
- 4.Lens type: Double glued achromatic lens
- 5.Collimation divergence angle:  $\leq 0.035^\circ$
- 6.Lens coating:  $R_{avg} \leq 0.5\% @ 400 - 700 \text{ nm}$

|  |        |          |                  |        |       |     |
|--|--------|----------|------------------|--------|-------|-----|
| DRAWING PROJECTION                                     |        |          | <b>LBTEK</b>     |        |       |     |
|  | NAME   | DATE     |                  |        |       |     |
| DRAWN  | BSHU   | 2025/9/8 | FIBER COLLIMATOR |        |       |     |
| APPROVAL   | WCHENG | 2025/9/8 | MATERIAL         | WEIGHT | SCALE | REV |
| FOR INFORMATION ONLY<br>NOT FOR MANUFACTURING PURPOSES |        |          | Silicon brass    | 29 g   | 2:1   | A   |