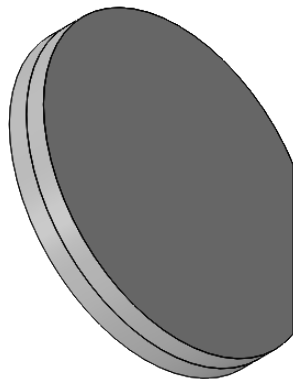


NOTES:

1. COMPONENT MATERIAL: LCP/N-BK7
2. ELEMENT DIAMETER: $\phi 25.4 +0/-0.1 \text{ mm}$
3. ELEMENT THICKNESS: $3.2 \pm 0.1 \text{ mm}$
4. TRIMMING WIDTH: $2.0 \pm 0.05 \text{ mm}$
5. CLEAR APERTURE: $\phi 20.0 \text{ mm}$
6. WORKING WAVELENGTH: 980 nm
7. RETARDANCE: $\lambda / 2$
8. SURFACE QUALITY (S/D) : 40/20
9. TRANSMITTANCE: $>98 \%$
10. AR COATING (S1, S2) : $R_{\text{avg}} < 0.5 \% @ 700-1100 \text{ nm}$
11. THE FINGER IS PARALLEL TO THE TRIMMING DIRECTION



DRAWING PROJECTION			LBTEK			
	NAME	DATE	PZGS25-5-980			
DRAWN	SHAN	AUG./16th/24	Polarization Grating			
APPROVAL	WCHENG	AUG./16th/24	MATERIAL	WEIGHT	SCALE	REV
FOR INFORMATION ONLY NOT FOR MANUFACTURING PURPOSES			LCP/N-BK7	4 g	2:1	A