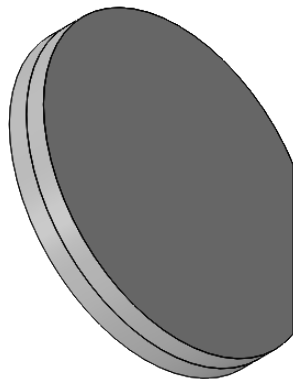


NOTES:

1. COMPONENT MATERIAL: LCP/N-BK7
2. ELEMENT DIAMETER:  $\varnothing 25.4 +0/-0.1$  mm
3. ELEMENT THICKNESS:  $3.2 \pm 0.1$  mm
4. TRIMMING WIDTH:  $2.0 \pm 0.05$  mm
5. CLEAR APERTURE:  $\varnothing 20.0$  mm
6. WORKING WAVELENGTH: 1550 nm
7. RETARDANCE:  $\lambda / 2$
8. SURFACE QUALITY (S/D) : 40/20
9. TRANSMITTANCE: >98 %
10. AR COATING (S1, S2) :  $R_{avg} < 0.5 \% @ 1100-1700$  nm
11. THE FINGER IS PARALLEL TO THE TRIMMING DIRECTION



DRAWING PROJECTION			<b>LBTEK</b>			
	NAME	DATE				
DRAWN	SHAN	AUG./16th/24	Polarization Grating			
APPROVAL	WCHENG	AUG./16th/24	MATERIAL	WEIGHT	SCALE	REV
FOR INFORMATION ONLY NOT FOR MANUFACTURING PURPOSES			LCP/N-BK7	4 g	2:1	B