

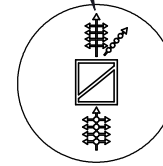
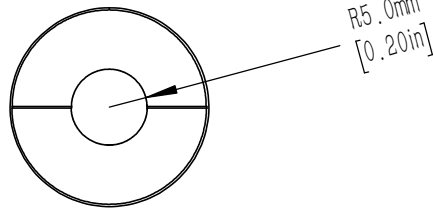
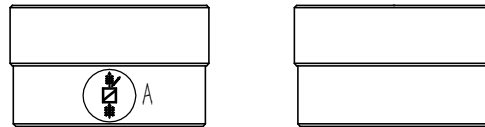
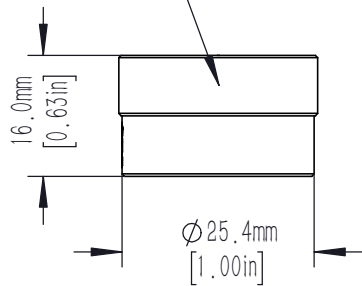


THE ARROW POINTS TO THE THREAD DIRECTION AND IS PERPENDICULAR TO THE ENGRAVED LINE

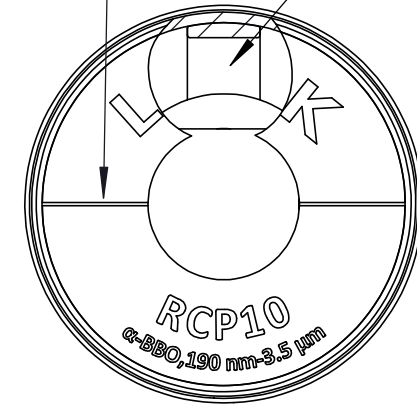
ENGRAVED LINE IS PARALLEL TO THE GROOVE

GROOVE

SMI EXTERNAL THREAD



DRAWING OF PARTIAL ENLARGEMENT A  
SCALE 3:1



DRAWING OF PARTIAL ENLARGEMENT B  
SCALE 2:1



NOTES:

OPTICAL SPECS

1. SUBSTRATE MATERIAL:  $\alpha$ -BBO
2. WORKING WAVELENGTH: 190nm~3.5  $\mu$ m
3. EXTINGTION RATIO: 100,000:1
4. ENTRANCE/EXIT WINDOWS: 20-10 SCRATCH-DIG,  $\lambda/8@633$ nm
5. Transmitted Wavefront Error:  $< \lambda/4@633$ nm
6. CLEAR APERTURE:  $>85\%$  CA
7. BEAM SEPARATION ANGLE:  $8^\circ$  REF@1064nm

MECHANICAL HOUSING SPECS

8. MATERIAL: ALUMINIUM 6061-T6
9. SURFACE PROCESS: HARD BLACK ANODIZING
10. CHAMFER: 0.3mm,  $45^\circ$
11. NO OBVIOUS SCRATCH, NO BURRS, NO LEAKING GLUE
12. WITH PROTECTIVE FILM ATTACHED TO BOTH ENDS

DATA REQUIRE

13. PROVIDE WITNESS SAMPLE AND DATA FOR BATCH PRODUCT WITH COATING (TRANSMISSION, REFLECTION, EXTINGTION RATIO)
14. EACH PRODUCT FULLY SEPERATED WITH PROTECTIVE FOAM

DRAWING PROJECTION			<b>LBTEK</b> <a href="http://www.lbtek.com">www.lbtek.com</a>			
	NAME	DATE	Rochon crystal polarization prism, 190nm~3.5 $\mu$ m			
DRAWN	Lynne	JUN./27st/22	MATERIAL	WEIGHT	SCALE	REV
APPROVAL	ZBW	JUN./27st/22	N/A	Kg	1:1	ZA
FOR INFORMATION ONLY NOT FOR MANUFACTURING PURPOSES						