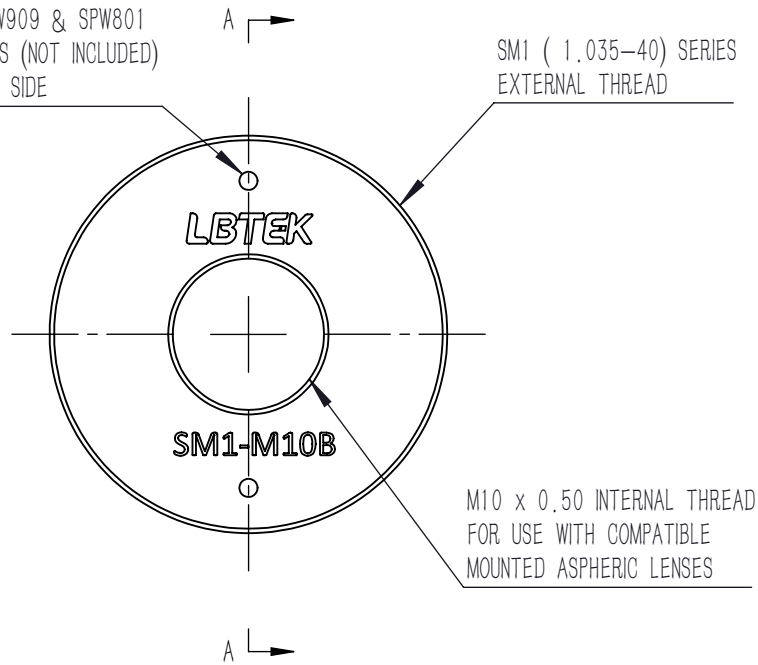
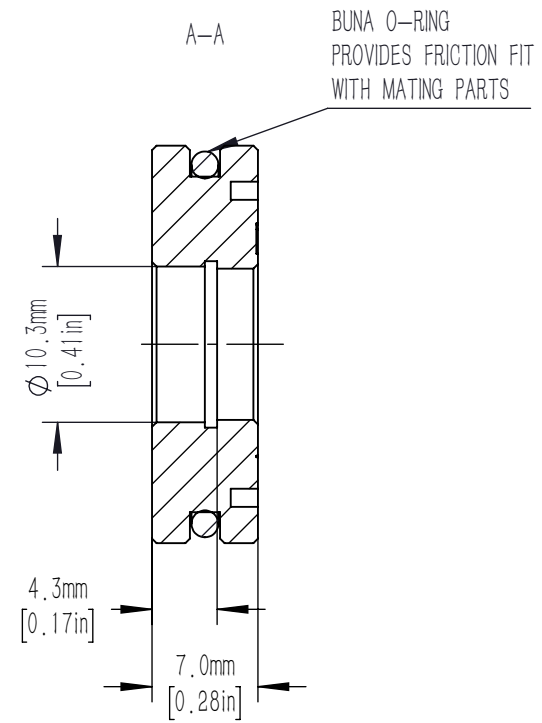


0.05in [ 1.2mm] HOLES  
 FOR USE WITH SPW909 & SPW801  
 SPANNER WRENCHES (NOT INCLUDED)  
 4 PLACES, 2 PER SIDE



SM1 ( 1.035-40) SERIES  
 EXTERNAL THREAD

M10 x 0.50 INTERNAL THREAD  
 FOR USE WITH COMPATIBLE  
 MOUNTED ASPHERIC LENSES



BUNA O-RING  
 PROVIDES FRICTION FIT  
 WITH MATING PARTS

DRAWING PROJECTION			<b>LBTEK</b>			
	NAME	DATE	SM1-M10B			
DRAWN	SSO	MAY./25th/23	THREAD ADAPTER			
APPROVAL	ZXU	MAY./25th/23	MATERIAL	WEIGHT	SCALE	REV
FOR INFORMATION ONLY NOT FOR MANUFACTURING PURPOSES			N/A	0.008 Kg	2:1	B