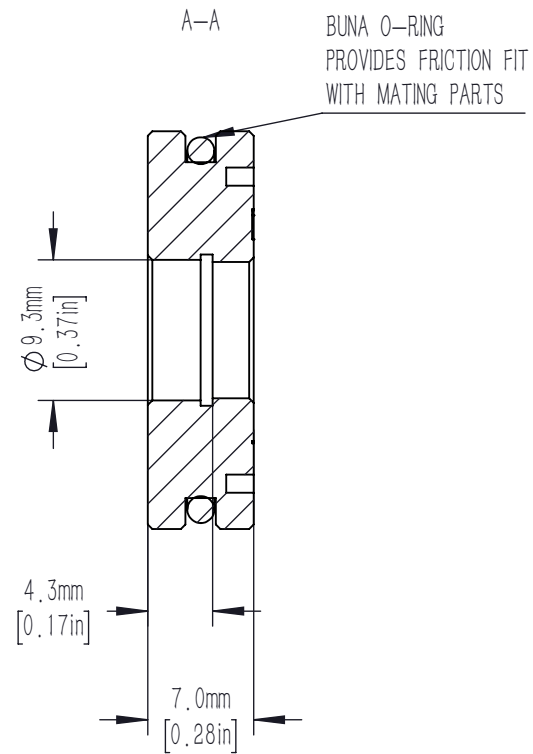
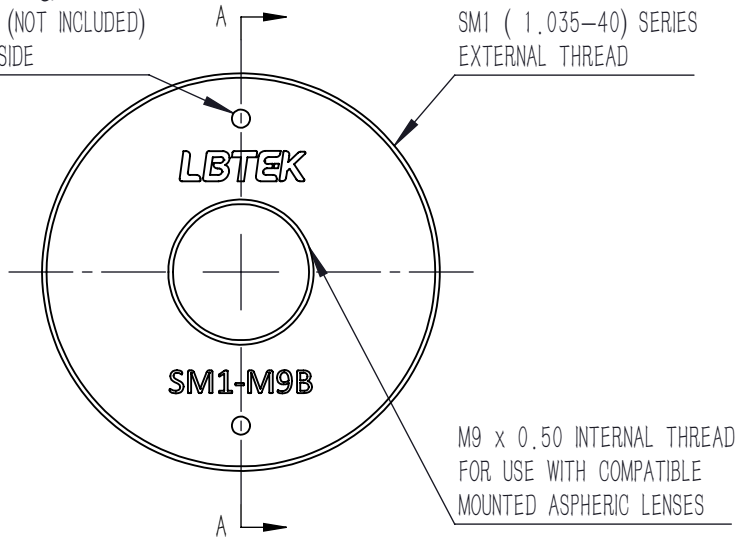


0.05in [1.2mm] HOLES
 FOR USE WITH SPW909 & SPW801
 SPANNER WRENCHES (NOT INCLUDED)
 4 PLACES, 2 PER SIDE



DRAWING PROJECTION			LBTEK			
	NAME	DATE				
DRAWN	CZH	MAY./25th/22	THREAD ADAPTER			
APPROVAL	ZXU	MAY./25th/22	MATERIAL	WEIGHT	SCALE	REV
FOR INFORMATION ONLY NOT FOR MANUFACTURING PURPOSES			N/A	0.009 Kg	2:1	B