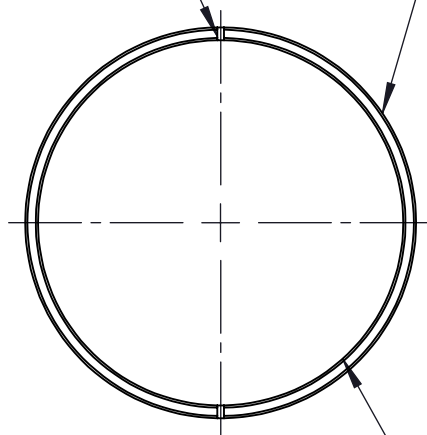
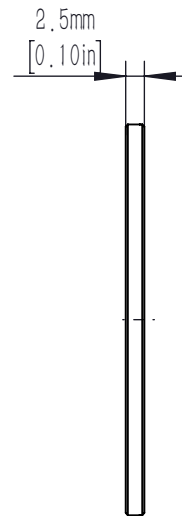


SPANNER WRENCH SLOTS
FOR USING WITH OWR-2A

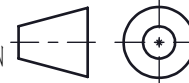
SM2(ϕ 2.035-40) SERIES
EXTERNAL THREAD



ϕ 48.3mm [ϕ 1.90in]
CLEAR APERTURE



DRAWING
PROJECTION



LBTEK

NAME

DATE

SM2R

DRAWN

BYIN

JUN./25th/19

SM2 SERIES RETAINING RING

APPROVAL

LDAI

JUN./25th/19

MATERIAL

WEIGHT

SCALE

REV

FOR INFORMATION ONLY
NOT FOR MANUFACTURING PURPOSES

ALUMINIUM

4.96 g

1:1

B