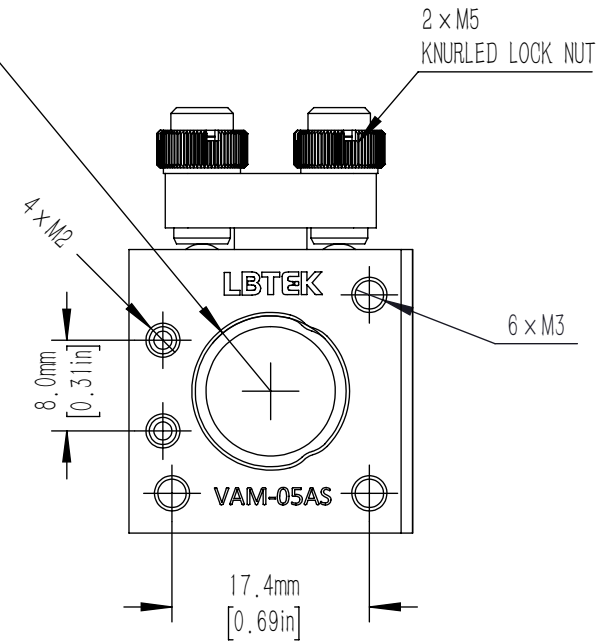
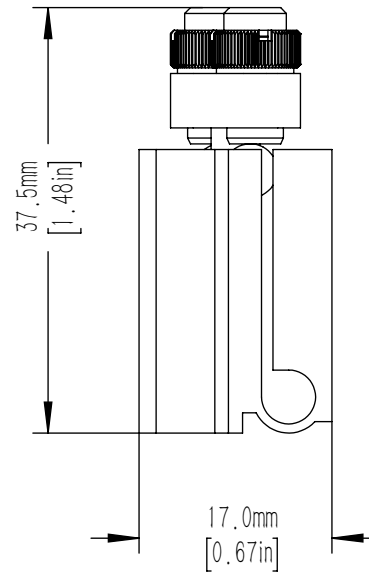
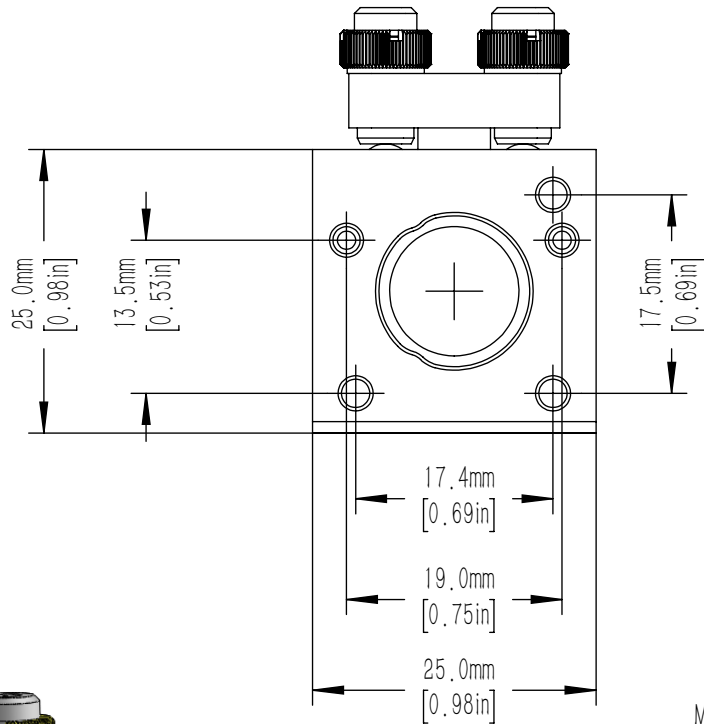
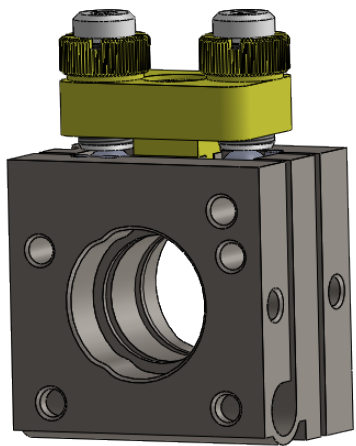
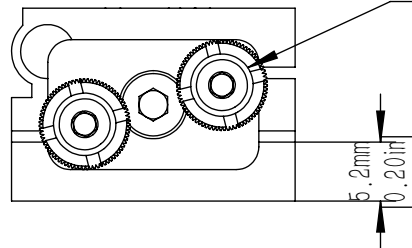


ACCEPTS 12.7mm [0.5in] OPTICS
 4.2mm [0.17in] DEE
 11.4mm [0.45in] CLEAR APERTUR



M5X0.2 ADJUSTER SCREWS
 PROVIDES +/-2.5°
 TOTAL ANGULAR DISPLACEMENT
 (0.52° PER REVOLUTION)
 2 PLACES 2.0mm [5/64in] HEX



DRAWING PROJECTION			LBTEK			
	NAME	DATE				
DRAWN	SSO	AU./22nd/23	RAO SEX WITH UNTHREADED HOLE FOR ϕ 12.7 mm OPTICS			
APPROVAL	ZXU	AU./22nd/23	MATERIAL	WEIGHT	SCALE	REV
FOR INFORMATION ONLY NOT FOR MANUFACTURING PURPOSES			STAINLESS STEEL	0.06Kg	3:2	A