

NOTES

1. DESIGN WAVELENGTH: 633 nm
2. TRANSMITTED BEAM DEVIATION: ± 5 arcmin
3. CLEAR APERTURE: $\varnothing 10$ mm

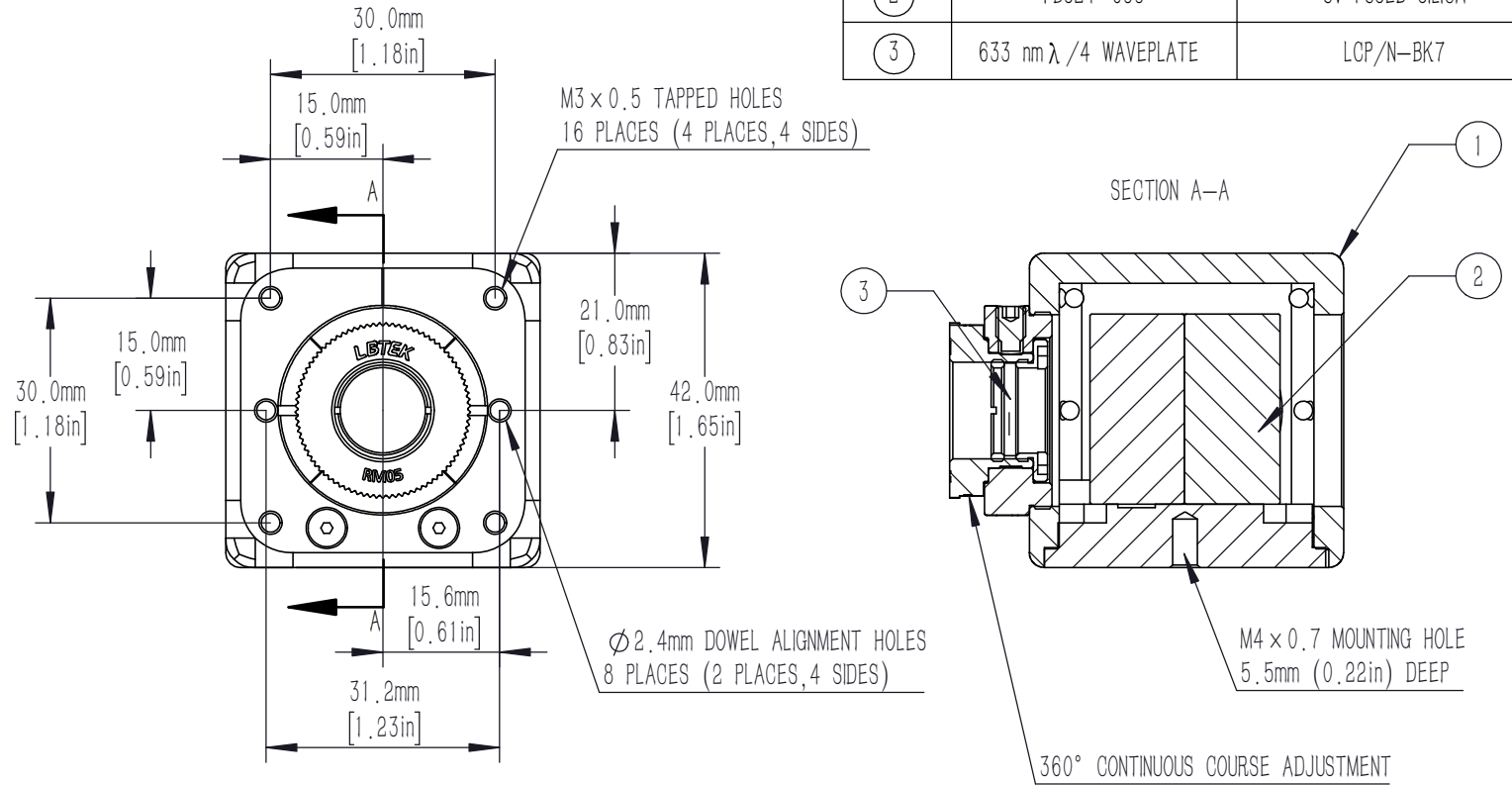
BEAMSPLITTER:

4. SURFACE QUALITY: 20/10(S/D)
5. EXTINCTION RATIO: $T_p/T_s > 2000:1$
6. WAVEFRONT ERROR(RMS): $< \lambda/4 @ 632.8$ nm
7. COATING(ALL 4 OUTER OPTICAL SURFACES):
V Coating@633 nm, Rabs: $< 0.25\%$, 0° AOI

WAVEPLATE

8. SURFACE QUALITY: 40/20(S/D)
9. DELAY: $\lambda/4$
10. DELAY TOLERANCE: $\pm \lambda/100$
11. WAVEFRONT ERROR(RMS): $< \lambda/4 @ 632.8$ nm
12. AR COATING: $R_{avg} < 0.5\% @ 400-700$ nm

NUMBER	PART DESCRIPTION	MATERIAL
①	MECHANICAL HOUSING	BLACK ANODIZED ALUMINUM
②	PBS24-633	UV FUSED SILICA
③	633 nm $\lambda/4$ WAVEPLATE	LCP/N-BK7



DRAWING PROJECTION							
	NAME	DATE					
DRAWN	LZHOU	Aug. /5th/24		VARIABLE CIRCULAR POLARIZER @633 nm			
APPROVAL	WCHENG	Aug. /5th/24		MATERIAL	WEIGHT	SCALE	REV
FOR INFORMATION ONLY NOT FOR MANUFACTURING PURPOSES				LCP/N-BK7 & UVFS	132 g	1:1	B