

NOTES

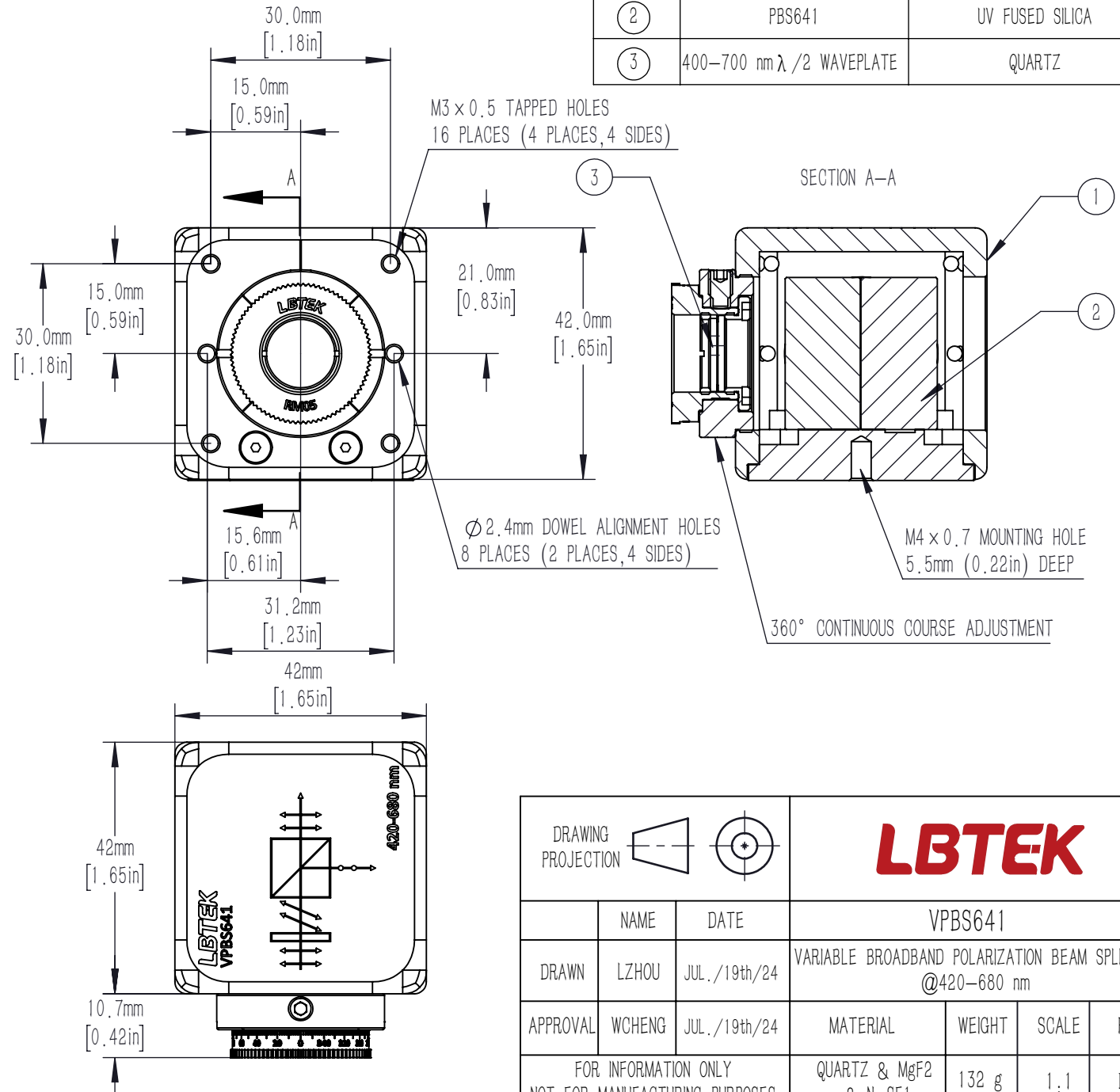
1. DESIGN WAVELENGTH: 420–680 nm
2. TRANSMITTED BEAM DEVIATION: ± 5 arcmin
3. CLEAR APERTURE: $\varnothing 10$ mm

BEAMSPLITTER:

4. SURFACE QUALITY: 40/20 (S/D)
5. EXTINCTION RATIO: $T_p/T_s > 1000:1$
6. WAVEFRONT ERROR(RMS): $< \lambda/4$ @632.8 nm
7. COATING (ALL 4 OUTER OPTICAL SURFACES):
AR Coating@420–680 nm, Rabs: $< 0.5\%$, (6° AOI, SINGLE SURFACE)

WAVEPLATE

8. SURFACE QUALITY: 40/20 (S/D)
9. DELAY: $\lambda/2$
10. DELAY TOLERANCE: $\pm \lambda/24$
11. WAVEFRONT ERROR(RMS): $< \lambda/8$ @632.8 nm
12. COATING: AR Coating@400–700 nm, Rabs $< 0.5\%$, (6° AOI, SINGLE SURFACE)



DRAWING PROJECTION				LBTEK					
		NAME		DATE		VPBS641			
DRAWN		LZHOU		JUL./19th/24		VARIABLE BROADBAND POLARIZATION BEAM SPLITTER @420–680 nm			
APPROVAL		WCHENG		JUL./19th/24		MATERIAL	WEIGHT	SCALE	REV
FOR INFORMATION ONLY NOT FOR MANUFACTURING PURPOSES				QUARTZ & MgF2 & N-SF1		132 g	1:1	B	