

NOTES

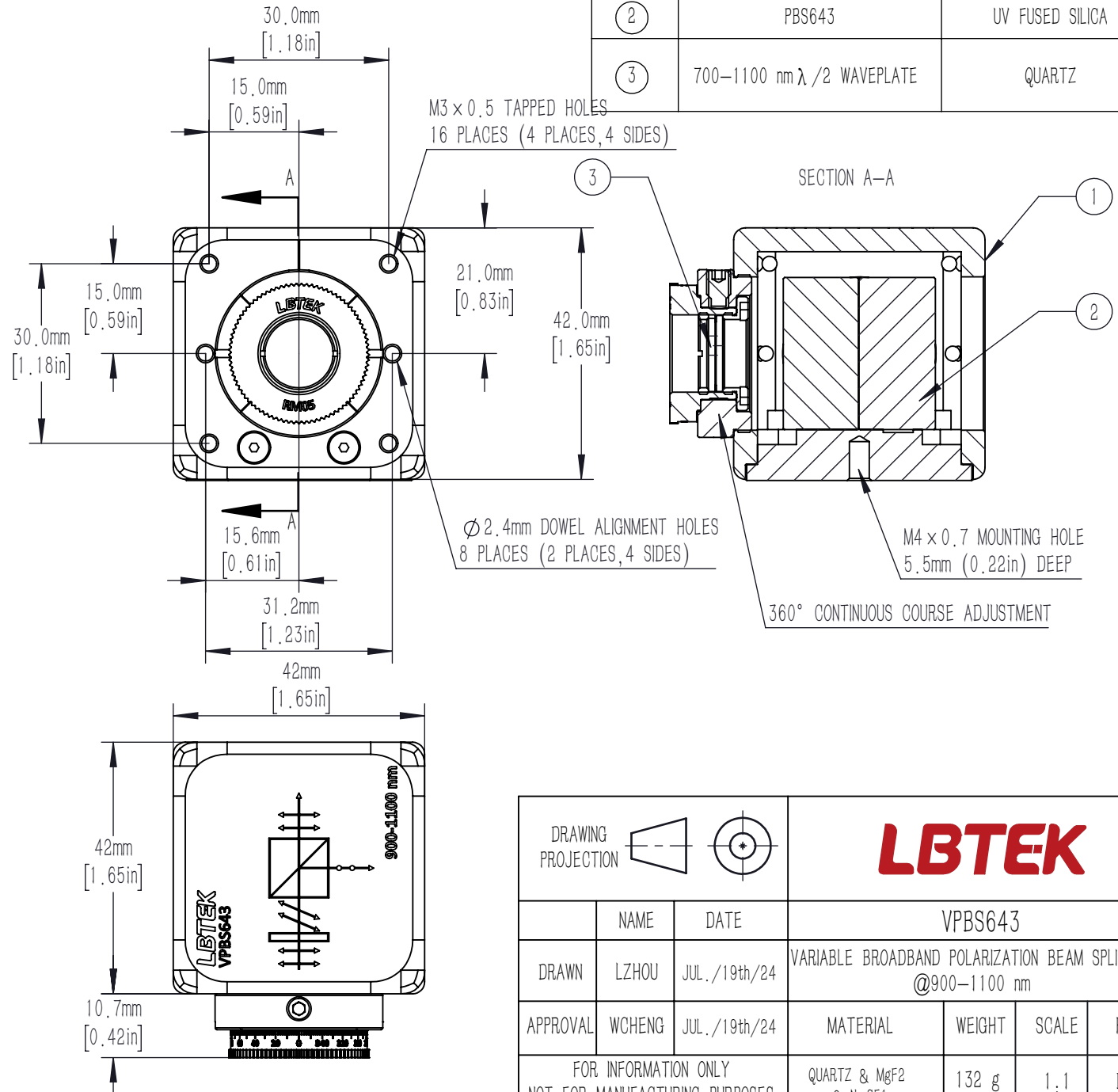
1. DESIGN WAVELENGTH: 900–1100 nm
2. TRANSMITTED BEAM DEVIATION:  $\pm 5$  arcmin
3. CLEAR APERTURE:  $\varnothing 10$  mm

BEAMSPLITTER:

4. SURFACE QUALITY: 40/20 (S/D)
5. EXTINCTION RATIO:  $T_p/T_s > 1000:1$
6. WAVEFRONT ERROR(RMS):  $< \lambda/4$  @632.8 nm
7. COATING (ALL 4 OUTER OPTICAL SURFACES):  
AR Coating@900–1300 nm, Rabs:  $< 0.5\%$ , ( $6^\circ$  AOI, SINGLE SURFACE)

WAVEPLATE

8. SURFACE QUALITY: 40/20 (S/D)
9. DELAY:  $\lambda/2$
10. DELAY TOLERANCE:  $\pm \lambda/50$
11. WAVEFRONT ERROR(RMS):  $< \lambda/8$  @632.8 nm
12. COATING: AR Coating@700–1100 nm, Rabs  $< 0.5\%$ , ( $6^\circ$  AOI, SINGLE SURFACE)



DRAWING PROJECTION				<b>LBTEK</b>			
		NAME		DATE		VPBS643	
DRAWN	LZHOU	JUL./19th/24		VARIABLE BROADBAND POLARIZATION BEAM SPLITTER @900–1100 nm			
APPROVAL	WCHENG	JUL./19th/24		MATERIAL	WEIGHT	SCALE	REV
FOR INFORMATION ONLY NOT FOR MANUFACTURING PURPOSES				QUARTZ & MgF2 & N-SF1	132 g	1:1	B