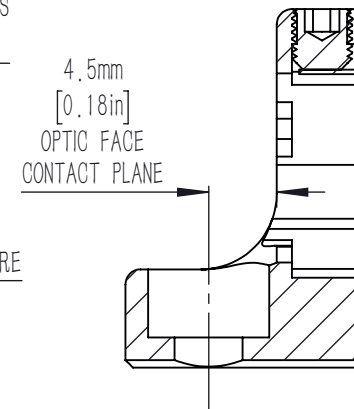
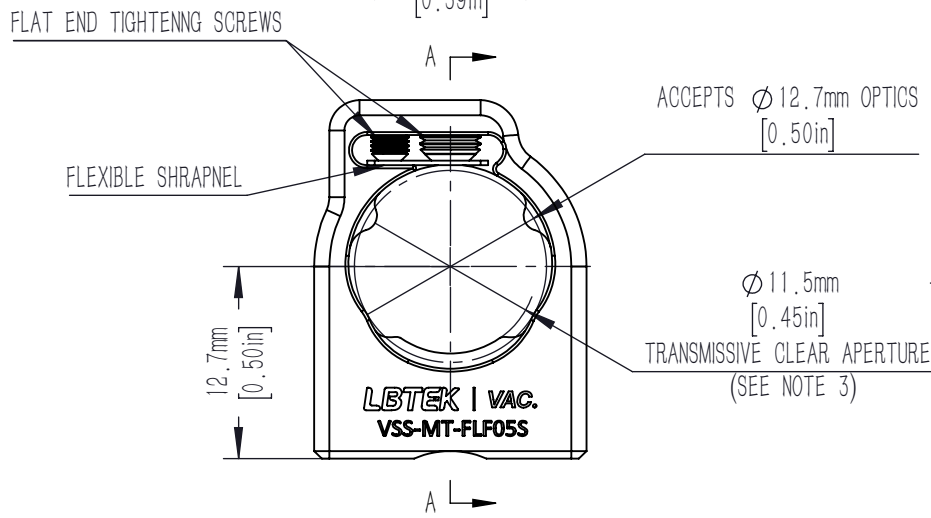
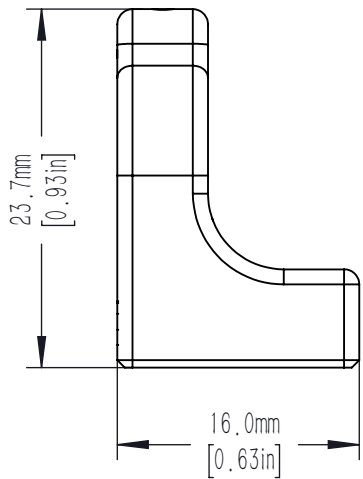
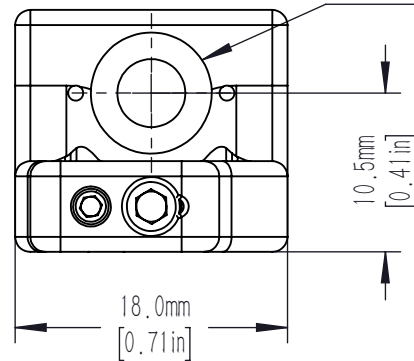


A-A



COUNTERBORED MOUNTING HOLE FOR USE WITH M4



- 1) RECOMMENDED DOWEL PIN FOR ALIGNMENT PIN FEATURES IS A STANDARD $\varnothing 2\text{mm}$ DIN 7-m6 (ISO 2338) GROUND DOWELPIN ($\varnothing 2.002\text{ mm}$ TO $\varnothing 2.008\text{ mm}$).
- 2) FOR A $\varnothing 2\text{mm}$ X $\varnothing 5\text{mm}$ PIN, WE RECOMMEND $\varnothing 0.0791\text{in}$ TO $\varnothing 0.0796\text{in}$ X $0.175\text{in} \pm 0.002\text{in}$ DEEP HOLES BE MADE INTO THE MATING SURFACE FOR THE MOUNT. THE SEPARATION OF THE HOLES IN RELATION TO THE MOUNTING HOLE LOCATION SHOULD HAVE A TOLERANCE OF $\pm 0.003\text{in}$.
- 3) FULL CLEAR APERTURE ACCESSIBLE ONLY WHEN USING LOW PROFILE MOUNTING SCREWS.

DRAWING PROJECTION			LBTEK			
	NAME	DATE				
DRAWN	ZZH	OCT./24th/25	For mounting optical components with a diameter of 12.7mm, Vaccum Series			
APPROVAL	YLI	OCT./24th/25	MATERIAL	WEIGHT	SCALE	REV
FOR INFORMATION ONLY NOT FOR MANUFACTURING PURPOSES			N/A	0.019 Kg	2:1	A