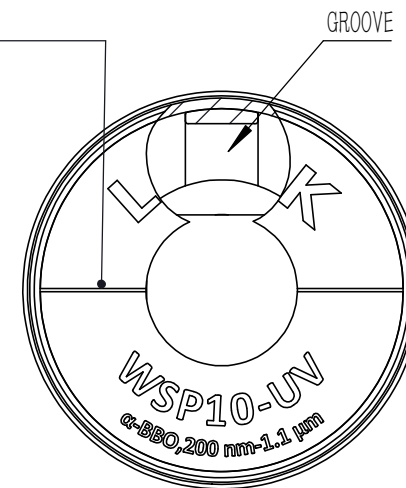


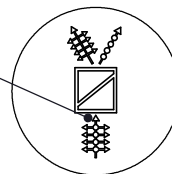


ENGRAVED LINE IS PARALLEL TO THE GROOVE



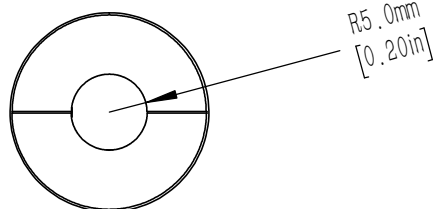
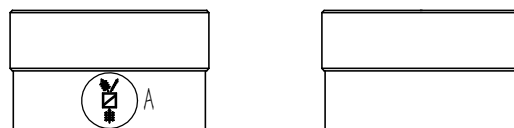
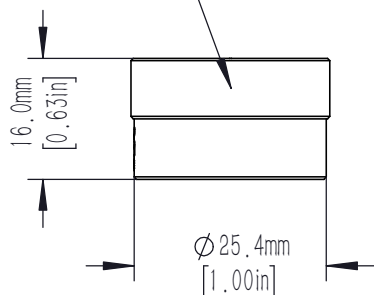
DRAWING OF PARTIAL ENLARGEMENT B
SCALE 2:1

THE ARROW POINTS TO THE THREAD DIRECTION AND IS PERPENDICULAR TO THE ENGRAVED LINE



DRAWING OF PARTIAL ENLARGEMENT A
SCALE 3:1

SM1 EXTERNAL THREAD



NOTES:

OPTICAL SPECS

1. SUBSTRATE MATERIAL: α -BBO
2. WORKING WAVELENGTH: 200nm~1.1 μ m
3. EXTINGTION RATIO: 100000:1
4. ENTRANCE/EXIT WINDOWS: 20-10 SCRATCH-DIG, $\lambda/8@633$ nm
5. Transmitted Wavefront Error: $<\lambda/4@633$ nm
6. CLEAR APERTURE: $>85\%$ CA
7. BEAM SEPARATION ANGLE: 15° REF@1064nm

MECHANICAL HOUSING SPECS

8. MATERIAL: ALUMINIUM 6061-T6
9. SURFACE PROCESS: HARD BLACK ANODIZING
10. CHAMFER: 0.3mm, 45°
11. NO OBVIOUS SCRATCH, NO BURRS, NO LEAKING GLUE
12. WITH PROTECTIVE FILM ATTACHED TO BOTH ENDS

DATA REQUIRE

13. PROVIDE WITNESS SAMPLE AND DATA FOR BATCH PRODUCT WITH COATING (TRANSMISSION, REFLECTION, EXTINGTION RATIO)
14. EACH PRODUCT FULLY SEPERATED WITH PROTECTIVE FOAM



DRAWING PROJECTION			LBTEK www.lbtek.com			
	NAME	DATE	Wollaston crystal polarization prism, 200nm~1.1 μ m			
DRAWN	Lynne	JUN./27st/22	MATERIAL	WEIGHT	SCALE	REV
APPROVAL	ZBW	JUN./27st/22	N/A	Kg	1:1	ZA
FOR INFORMATION ONLY NOT FOR MANUFACTURING PURPOSES						