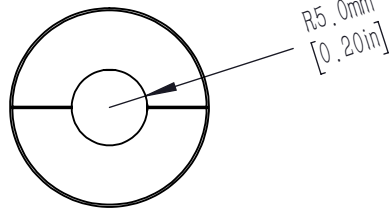
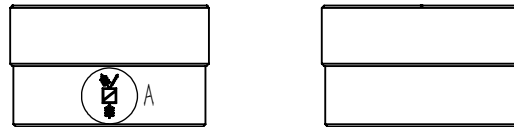
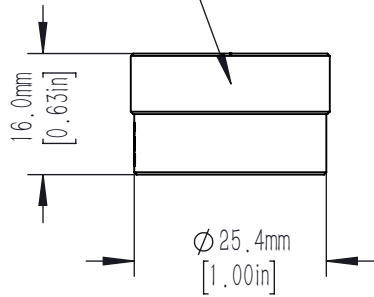
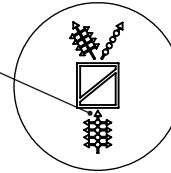




SM1 EXTERNAL THREAD



THE ARROW POINTS TO THE THREAD DIRECTION AND IS PERPENDICULAR TO THE ENGRAVED LINE

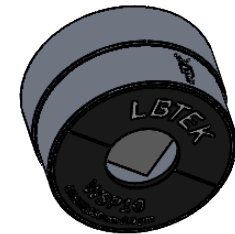


DRAWING OF PARTIAL ENLARGEMENT A  
SCALE 3:1

ENGRAVED LINE IS PARALLEL TO THE GROOVE



DRAWING OF PARTIAL ENLARGEMENT B  
SCALE 2:1



NOTES:

OPTICAL SPECS

1. SUBSTRATE MATERIAL: CALCITE
2. WORKING WAVELENGTH: 350nm~2.3 μm
3. EXTINGTION RATIO: 10000:1
4. ENTRANCE/EXIT WINDOWS: 20-10 SCRATCH-DIG, λ/8@633nm
5. Transmitted Wavefront Error (RMS): <math>\lambda/10@633nm</math>
6. CLEAR APERTURE: >85% CA
7. BEAM SEPARATION ANGLE: 15° REF@1064nm

MECHANICAL HOUSING SPECS

8. MATERIAL: ALUMINIUM 6061-T6
9. SURFACE PROCESS: HARD BLACK ANODIZING
10. CHAMFER: 0.3mm, 45°
11. NO OBVIOUS SCRATCH, NO BURRS, NO LEAKING GLUE
12. WITH PROTECTIVE FILM ATTACHED TO BOTH ENDS

DATA REQUIRE

13. PROVIDE WITNESS SAMPLE AND DATA FOR BATCH PRODUCT WITH COATING (TRANSMISSION, REFLECTION, EXTINGTION RATIO)
14. EACH PRODUCT FULLY SEPERATED WITH PROTECTIVE FOAM

DRAWING PROJECTION			<b>LBTEK</b>			
	NAME	DATE				
DRAWN	TL	2024/11/13	Wollaston crystal polarization prism, 350nm~2.3 μm			
APPROVAL	CWZ	2024/11/13	MATERIAL	WEIGHT	SCALE	REV
FOR INFORMATION ONLY NOT FOR MANUFACTURING PURPOSES			Calcite	18.61 g	1:1	ZC