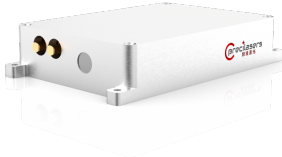


1060-1625nm Fixed external cavity diode laser

TUNABLE LASERS (ECDL)



1060-1625nm Fixed external cavity diode laser Precilasers' fixed external cavity semiconductor lasers feature mode-hop-free operation, narrow linewidth, ultra-low intensity noise, and an ultra-wide modulation bandwidth. These characteristics make them ideal for a wide range of research applications, including atomic gravimeters, optical lattices, lidar, coherent optical communications, high-precision optical sensing, optical metrology, and precision spectroscopy.

- Narrow Linewidth Low Intensity
- Noise High
- Speed Tuning Possible Linear
- Polarization Never Mode
- Excellent Beam Quality
- Rb Atom Experiment and
- Application Optical Phase Locking
- Fiber Optic Sensing

Specifications

Parameter	Specification
Available Wavelength Options	1000-1260nm / 1260-1360nm / 1360-1525nm / 1525-1575nm / 1575-1625nm
Typical Wavelengths	1064nm, 1178nm / 1319nm / 1396.89nm / 1550.12nm, 1560.48nm / 1589.95nm
Output Power	>10mW
Linewidth (1) (100 μ s integration time)	<20kHz / <20kHz / <20kHz/10kHz (2) / <10kHz/5kHz (2) / <10kHz/5kHz (2)
Tuning Range (Temperature)	>4GHz / >7GHz / >4GHz/7GHz (3) / >10GHz/7GHz (3) / >10GHz/7GHz (3)
Current Tuning Range	>500MHz
Current Tuning Bandwidth	>1MHz
Intensity Noise (10Hz-10MHz integration)	<0.03%
Intensity Noise (10kHz)	<-140dBc/Hz
Polarization Extinction Ratio	>20dB
Power Stability (3 Hour RMS)	<1%
Beam Quality	M ² <1.1
Output Mode	Single-mode polarization-maintaining fiber output, FC/APC connector
Package	Including power supply and temperature control driver, volume: 117mm*83mm*25mm OR undriven Butterfly Package Package
Weight	<0.5kg
Operating Temperature	0-60°C
Power Consumption	<3W
Powered By	5VDC, 1A, power adapter included

Source: WaveQuanta product database. For ordering, customization (wavelength, power, package) and quotation, contact sales@wavequanta.com.