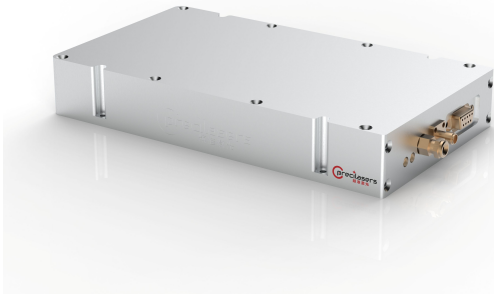


# 1525-1610nm Fiber DFB laser

## NARROW-LINEWIDTH CW LASERS



1525-1610nm Fiber DFB laser Precilasers' narrow-linewidth Erbium-doped fiber DFB laser is realized by writing fiber gratings on erbium-doped optical fibers. It can cover any wavelength between 1525-1610nm with a linewidth of 1kHz/2kHz.

- Narrow Line Width Tunable
- Never Mode
- Linear Polarization Continuous Laser
- Quantum Computing Quantum Precision
- Measurement Sensing

### Specifications

Parameter	FL-SF-XXXX-S (1)
Wavelength Optional Range	1525-1580nm / 1580-1610nm
Common Wavelengths	1542nm, 1550.12nm, 1560.48nm, 1590nm
Output Power	>40mW / >10mW
Tuning Range (Temperature)	>1nm, Never Mode-hop
Output Mode	Single-mode polarization-maintaining fiber
Linewidth (2) (100us integration time)	<1kHz (3) / <2kHz
Frequency Noise[Hz/rtHz]	65@100Hz,26@1kHz,13@10kHz
Phase Noise[urad/rtHz]@1m	2.0@100Hz,0.8@1kHz,0.4@10kHz
Polarization Extinction Ratio (PER)	>23dB
Power Stability (3 hour RMS)	<0.75%
Beam Quality	M <sub>2</sub> <1.05
Intensity Noise (10Hz-10MHz integration)	<0.1%
Intensity Noise (10MHz)	<-140dBc/Hz
Intensity Noise (Peak)	<-110dBc/Hz
Relaxation Oscillation Peak Frequency	0.1MHz-0.5MHz
PZT Tuning Range	>3GHz
PZT Tuning Bandwidth	>5kHz
Weight	<1.1kg
Operating Temperature	10°C-60°C
Power Consumption	<15W
Powered By	12V, 1A, DC
Power Adapter	Enter: 100-240V AC, 50-60Hz, 1.4A; Output: 12V 5A DC

Source: WaveQuanta product database. For ordering, customization (wavelength, power, package) and quotation, contact sales@wavequanta.com.