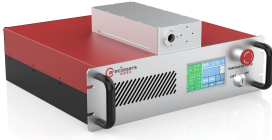


514nm Narrow linewidth laser

NARROW-LINEWIDTH CW LASERS



514nm Narrow linewidth laser Based on single frequency seed laser, low noise fiber amplifier and high efficiency frequency convert technique, Precilasers can provide narrow linewidth 514nm CW lasers, features with high frequency stability, long life and good beam quality.

- High Power Narrow Linewidth
- Good Beam Quality High
- Power Stability
- Pump Laser for
- Interference Lithography Optical Lattice
- Optical Tweezer

Specifications

| Parameter | FL-SF-514-X (1) -CW |
|--|---|
| Center Wavelength | 514.00nm |
| Linewidth (2) (100 us integration) | <20kHz |
| Operational Mode | CW |
| Output Power | >1W / >6W / >10W / >30W |
| Beam Diameter | 1±0.15 mm |
| Beam Waist Location | output aperture±0.5m■ |
| Beam Divergence (full angle) | <1mrad |
| Beam Circularity | 0.9-1.1 |
| Beam Pointing Stability (PP) | <15μrad / <50μrad |
| Beam Quality | TEM00, M ² <1.1 |
| Polarization | linear, >20dB |
| Power Stability | <0.75% @3hours, RMS |
| Relative Intensity Noise | <0.2%(RMS, 10Hz-10MHz integration) |
| Cooling | Air cooling / Water cooling |
| Cold Start | <2 hours |
| Warm Start | <30 minutes |
| Controller Size | ≤483mm x 420mm x 133mm / ≤483mm x 420mm x 105mm |
| Laser Head Size | ≤358mm x 90mm x 70mm(1W) / ≤405mm x 260mm x 82mm (6W, 10W, 30W) |
| Chiller Size | NA / ≤58cm x 29cm x 52cm |
| Chiller Weight | ≤25kg |
| Cable Length Between Laser Head And Controller | >1.5m |
| Operating Temperature (No condensing) | 15-30 °C (Air cooling) / 15-35 °C (Water cooling) |
| Power Supply | 100V-240V, AC, 50/60Hz |
| Communication | RS422 |

Source: WaveQuanta product database. For ordering, customization (wavelength, power, package) and quotation, contact sales@wavequanta.com.