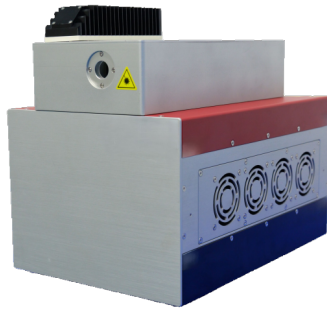


532nm Laser (Small size)

NARROW-LINEWIDTH CW LASERS



532nm Laser (Small size) Based on single frequency seed laser, fiber laser amplification and high efficiency frequency conversion technology, Precilasers can provide narrow linewidth 532nm laser with maximum output of 8W, high frequency stability, long lifetime and excellent beam quality.

- High Frequency Stability High
- Power Stability Excellent Beam
- Quality Never Mode
- Precision Measurement Wafer Inspection
- Interference Exposure

Specifications

Parameter	FL-SF-532-X-CW
Center Wavelength	532nm
Linewidth(100 us integration)	<10kHz
Operation Mode	Continuous
Output Power	>8W
Beam Waist Diameter	2.3±0.15mm
Beam Waist Location Relative to Output Window (m)	Output window within ±1m
Beam Divergence (Full Angle)	<0.35mrad
Beam Ellipticity	0.9-1.1
Pointing Stability (μrad)	<15μrad@3h
Beam Quality	TEM00, M ² <1.1
Polarization	>22dB
Power Stability	<2% @ 168hours, P-P
Relative Intensity Noise	<0.06% (RMS, 10Hz-10MHz integration)
Cooling	Air Cooling
Cold Start	<30 minutes
From Standby	<15 minutes
Laser Controller Dimensions	≤235mm x 350mm x 185mm
Laser Head Dimensions	≤150mm x 305mm x 109mm
Chiller Dimensions	≤6kg
Chiller Weight	≤15kg
Cable Length between Controller and Head	Non-detachable optical fiber length>1.5m
Temperature (No condensation conditions)	15-30 °C (Air Cooling)
Power Supply	100V-240V, AC, 50/60Hz
Power Consumption	<180W
Communication	RS422

Source: WaveQuanta product database. For ordering, customization (wavelength, power, package) and quotation, contact sales@wavequanta.com.