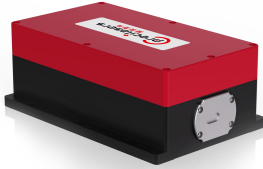


# 770-795nm Fixed external cavity diode laser

## TUNABLE LASERS (ECDL)



770-795nm Fixed external cavity diode laser Precilasers' fixed external cavity semiconductor lasers have the characteristics of no mode hopping, narrow line width, ultra-low intensity noise and ultra-large modulation bandwidth. It has important applications in research fields such as atomic gravimeters, optical lattices, lidar, coherent optical communications, high-precision optical sensing, optical measurement and precision spectroscopy.

- Narrow Linewidth Low Intensity
- Noise High
- Speed Tuning Possible Linear
- Polarization Excellent Beam Quality
- Rb Atom Experiment and
- Application Optical Phase Locking
- Fiber Optic Sensing

### Specifications

Parameter	Specification
Available Wavelength Options	770nm-795nm
Typical Wavelengths	780nm / 795nm
Package Type	Butterfly device, no driver / System integration, small housing, including driver / System integration, large housing, including driver
Output Mode	Free Space (Built-in isolator) / FC/APC built-in small isolator / FC/APC built-in small isolator / Free Space (Built-in isolator) / FC/APC (2) (Built-in isolator)
Beam Quality	<1.3 / <1.1 / <1.1 / <1.3 / <1.1
Output Power	>15mW / >3mW / >3mW / >15mW/30mW (4) / >10mW/20mW (4)
Temperature Frequency Tuning Range	>5GHz
Linewidth (1) (100µs integration time )	<100KHz (3) /200KHz
Polarization Extinction Ratio	>20dB
Power Stability (3 Hours RMS)	<1%
Intensity Noise (10Hz-10MHz integration)	<0.03%
Intensity Noise (10kHz)	<-140dBc/Hz
Current Tuning Range	>500MHz
Current Tuning Bandwidth	>1MHz
Weight	Driver version included, <1.5kg
Operating Temperature	0-60°C
Power Consumption	<3W
Powered By	5VDC, 1A, power adapter included

Source: WaveQuanta product database. For ordering, customization (wavelength, power, package) and quotation, contact sales@wavequanta.com.